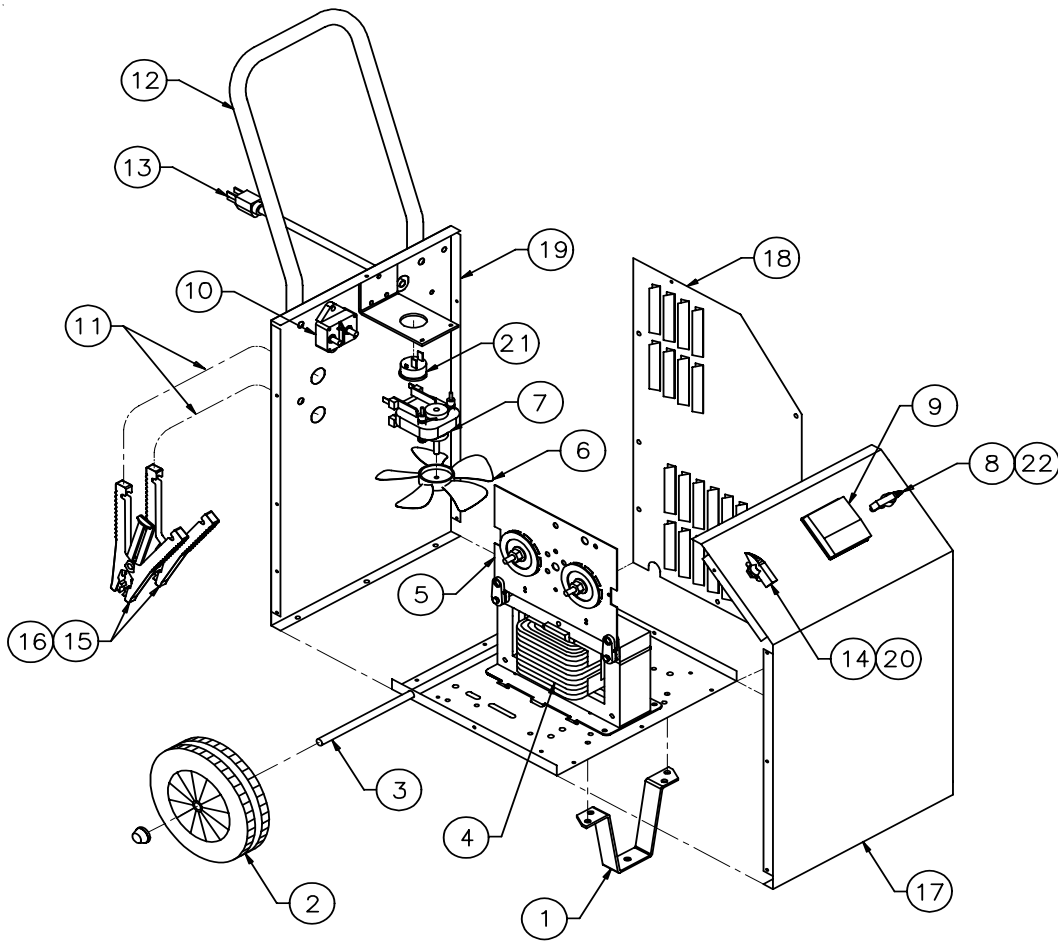


**Repair part list MC600 Matco
(Units with serial numbers 000100-000580)**

<u>Item</u>	<u>Description</u>	<u>Part No.</u>	<u>Item</u>	<u>Description</u>	<u>Part No.</u>
1	Front leg	605671	14	AC Cord	605206
2	Wheels w/nuts	605672	15	Switch w/knob	605675
3	Axle w/nuts	610052	16	Switch Rocker	610172
4	Transformer	610862	17	Clamps (1pair, includes jaws)	6202
5	Rectifier	610100	18	Jaw Kit (repairs 1 clamp)	610970
6	Fan Blade	610189	19	Front Panel MC600	610980
7	Fan Motor	610190	20	Right Side Panel ¹	611104
8	Timer w/knob	610389	21	Back Panel	610977
9	Ammeter	605204	22	Pointer Knob (1ea)	603147
10	DC Circuit Breaker (1ea)	610069	23	AC Circuit Breaker	610397
11	DC Cable set	611074	Not shown		
12	Handle	610753		Top Panel ¹	611105
13	Stop/Go Lite	604579		Left Side Panel ¹	611106

Notes: 1. Item 20, use 610976 panel for units with serial numbers 000100-000504
 Top panel, use 610978 panel for units with serial numbers 000100-000504
 Left side panel, use 610979 panel for units with serial numbers 000100-000504



**Repair part list MC600 Matco
(Units with serial numbers 000581-)**

<u>Item</u>	<u>Description</u>	<u>Part No.</u>	<u>Item</u>	<u>Description</u>	<u>Part No.</u>
1	Front leg	605671	13	AC Cord	610696
2	Wheels w/nuts	605672	14	Switch w/knob	611083
3	Axle w/nuts	610052	15	Clamps (1pair, includes jaws)	6202
4	Transformer	610862	16	Jaw Kit (repairs 1 clamp)	610970
5	Rectifier	610100	17	Front Panel MC600	611115
6	Fan Blade	610189	18	Right Side Panel	611104
7	Fan Motor	610190	19	Back Panel	610977
8	Timer w/knob	610895	20	Pointer Knob (1ea)	603147
9	Ammeter	605204	21	AC Circuit Breaker	610397
10	DC Circuit Breaker	610536	22	Pointer Knob w/set screw (1ea)	610930
11	DC Cable set	611084		Not shown	
12	Handle	610753		Top Panel	611105
				Left Side Panel	611106